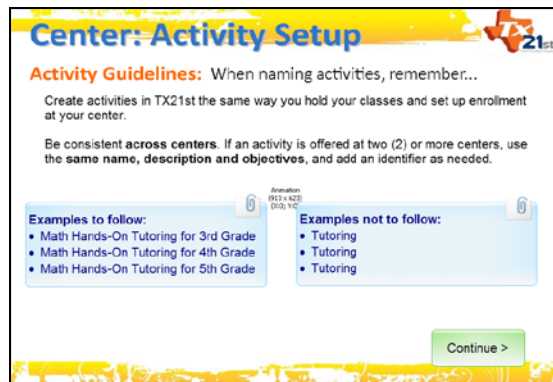


Center: Activity Setup
Text Captions: Continue >



Center: Naming Activities
Text Captions: Examples to follow:

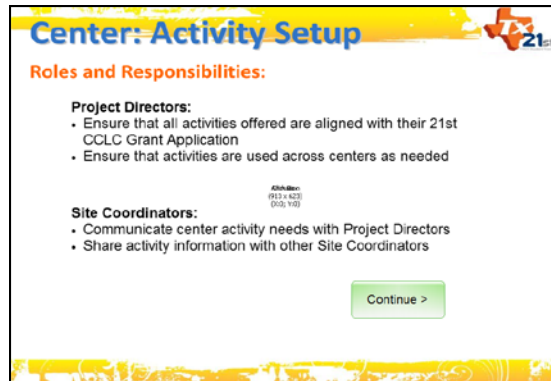
- Math Hands-On Tutoring for 3rd Grade
- Math Hands-On Tutoring for 4th Grade
- Math Hands-On Tutoring for 5th Grade

Create activities in TX21st the same way you hold your classes and set up enrollment at your center.

Be consistent across centers. If an activity is offered at two (2) or more centers, use the same name, description and objectives, and add an identifier as needed.

Examples not to follow:

- Tutoring
 - Tutoring
 - Tutoring
- Continue >



Center: Activity Setup

Text Captions: Project Directors:

Ensure that all activities offered are aligned with their 21st CCLC Grant Application

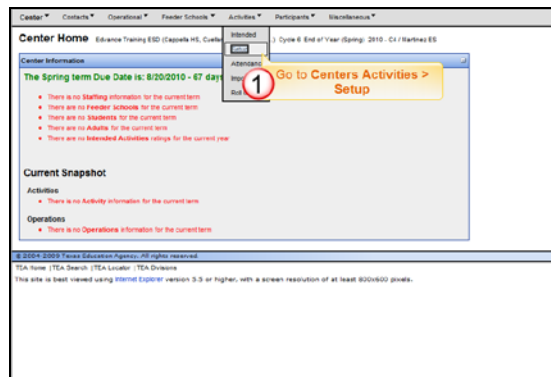
Ensure that activities are used across centers as needed

Site Coordinators:

Communicate center activity needs with Project Directors

Share activity information with other Site Coordinators

Continue >



Slide 4

Text Captions: Go to Centers Activities > Setup

Center: Adding an Activity

Center | Contacts | Operational | Feeder Schools | Activities | Participants | Miscellaneous

Activities - Enhance Training ESD (Capekels HS, Custer HS, Brown Elm -) Cycle 6 End of Year (Spring) 2010 - C1 / Capekels HS

Note 1: Selecting "All Centers" and Filter will show all activities entered/used by any Center within the Grant.
Note 2: Deselecting "Active Only" and Filter will show both Active and Inactive Activities.

[Add Activity](#)

Filter By	Component	Name	Description	All Centers	Active Only	Filter	Reset
Active				<input type="checkbox"/>	<input checked="" type="checkbox"/>		
CS Science			Students will meet via online webinars with Forensic Scientists and solve m.	<input type="checkbox"/>	<input checked="" type="checkbox"/>	Update	Schedule Email Delete
Math and Science Careers			Students will explore careers that require mathematics.	<input checked="" type="checkbox"/>	<input type="checkbox"/>	Update	Schedule Email Delete

© 2004-2009 Texas Education Agency. All rights reserved.
TEA Home | TEA Search | TEA Locator | TEA Database
This site is best viewed using Internet Explorer version 9.0 or higher, with a screen resolution of at least 800x600 pixels.

The Activities page opens where you can:

- Filter,
- Add, or
- Update activities

An activity cannot be updated/modified once an activity has been used by one or more centers.

Slide 6

Text Captions: The Activities page opens where you can:

Filter,

Add, or

Update activities

An activity cannot be updated/modified once an activity has been used by one or more centers.

Center | Contacts | Operational | Feeder Schools | Activities | Participants | Miscellaneous

Activities - Enhance Training ESD (Capekels HS, Custer HS, Brown Elm -) Cycle 6 End of Year (Spring) 2010 - C1 / Hartree ES

REMEMBER: Activities entered in previous years should be utilized whenever possible by using the Roll Over screen.
[No Activities match the specified criteria.](#)

Note 1: Selecting "All Centers" and Filter will show all activities entered/used by any Center within the Grant.
Note 2: Deselecting "Active Only" and Filter will show both Active and Inactive Activities.

[Add Activity](#)

Filter By	Component	Name	Description	All Centers	Active Only	Filter	Reset
-----------	-----------	------	-------------	-------------	-------------	--------	-------

© 2004-2009 Texas Education Agency. All rights reserved.
TEA Home | TEA Search | TEA Locator | TEA Database
This site is best viewed using Internet Explorer version 9.0 or higher, with a screen resolution of at least 800x600 pixels.

2 [Select All Centers](#)

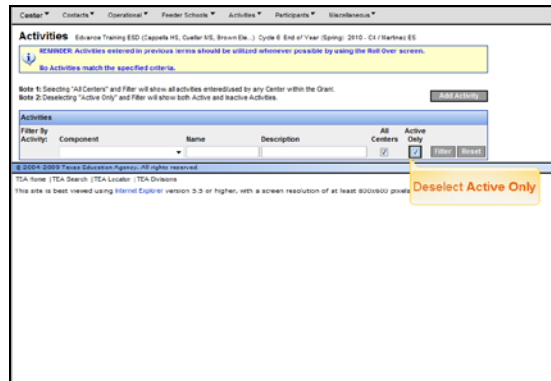
The Activities page opens

Slide 7

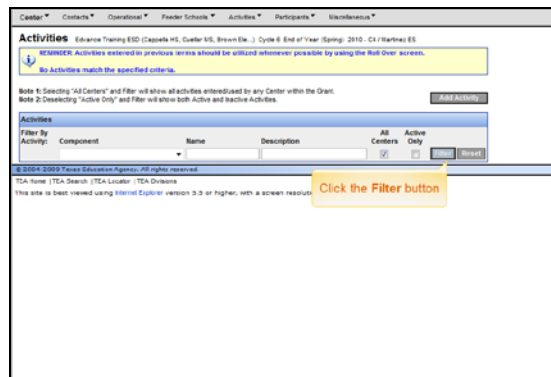
Text Captions: The Activities page opens

Select All Centers

Center: Adding an Activity



Slide 9
Text Captions: Deselect Active Only



Slide 10
Text Captions: Click the Filter button

Center: Adding an Activity

Center * **Contacts** * **Operational** * **Franchising** * **Activities** * **Participants** * **Unclassified** *
Activities - Advance Training (ESD) (Capehart M, Center M, Brown E, J, Cycle 8 End of Year (Spring 2010 - CI / Harbor) ES

MEMBER Activities entered in previous terms should be edited whenever possible by using the Edit Over screen.

Note 1: Deselecting "All Centers" and Filter will show all activities introduced by any Center within the Organ. **Add Activity**
Note 2: Deselecting "Active Only" and Filter will show both Active and Inactive Activities.

Activities

Filter By	Component	Name	Description	All Centers	Active Only	
Active				<input checked="" type="checkbox"/>	<input type="checkbox"/>	Update Schedule Cancel Delete
Name	Description	Active				
CS Science	Students will meet via online webinars with Formac Scientists and solve th...	<input checked="" type="checkbox"/>				
Family Tablets and Digital Tis	Families will learn how to use social media tools to connect with other re...	<input checked="" type="checkbox"/>				
Math for Health	Service Learning project organized by students to determine strategy and de...	<input checked="" type="checkbox"/>				Click the Update button
Math and Science Careers	Students will explore careers that require mathematics	<input checked="" type="checkbox"/>				

© 2006-2009 Texas Education Agency. All rights reserved.
TSA Name | TSA Search | TSA Leader | TSA Division
This site is best viewed using Internet Explorer - version 8.0 or higher with a screen resolution of at least 800x600 pixels.

The Activities page displays all activities.

Slide 12

Text Captions: The Activities page displays all activities.
Click the Update button

Center * **Contacts** * **Operational** * **Franchising** * **Activities** * **Participants** * **Unclassified** *
Activities - Advance Training (ESD) (Capehart M, Center M, Brown E, J, Cycle 8 End of Year (Spring 2010 - CI / Harbor) ES

This Activity cannot be fully updated if it has been used in the past or is being used by another Center. Changes to this activity could adversely affect prior history or the objectives of another Center. You may only change the User, System ID, Objectives, and Active Status which will enable/Disable Activity Schedule for this center.

Please fill out the information below for the activity.

Activity Information

Activity:

User System ID:

Targeted Audience
The activity must be classified as either primarily serving students attending the center, or their adult family members.
Students:

Activity Description
Please include a description of no more than 1,000 characters about the activity.
Students will meet via online webinars with Formac Scientists and solve th...
Our science knowledge and/or gaining new knowledge.

Change Description
If you are modifying this Activity, please provide an explanation as to why the change is being made.

Objectives: New content strategy to develop objectives
Attendance - Provide engaging activities, real-life snacks, and opportunities for interactivity and fun.
Behavior - Work closely with campuses to incorporate the Character Counts program and encourage
Promote Dates - Students will develop a "Be a Hero" and explore their potential needs as adults, and
Character Counts - Encourage for parents to monitor & reward participation and positive behavior.

Slide 14

Center: Adding an Activity

Change Description
If you are modifying this Activity, please provide an explanation as to why the change is being made:

Objectives: View complete Strategy for Meeting Objectives!
Attendance - Provide engaging activities, notebook checks, and opportunities for interactivity and fun!
Behavior - Work closely with caregivers to incorporate the Teacher-Caregiver program and encourage!
Promote Rates - Students will develop a "30 Minutes" and explore their potential needs as adults, as
Academics - Students will participate in engaging activities that include cooperative games, specializations

This checkbox will determine whether the Schedule is turned on for this Activity for this term. (Check enables Schedule / Uncheck disables Schedule)
 Save

3 Select the Active check box

Academic Assistance: Academic Enrichment Learning Program

If the activity was intentionally designed to incorporate other elements beyond the primary category identified above, please select a second category from the following dropdown list.

"Other" description:

Activity Targeted Specific Student Populations
Please indicate if the activity was specifically designed to exclusively provide services to one or more of the following target populations. Please check all that apply.

Slide 15
Text Captions: Select the Active check box

Academic Assistance: Academic Enrichment Learning Program

If the activity was intentionally designed to incorporate other elements beyond the primary category identified above, please select a second category from the following dropdown list.

"Other" description:

Activity Targeted Specific Student Populations
Please indicate if the activity was specifically designed to exclusively provide services to one or more of the following target populations. Please check all that apply.

Students not performing at grade level, are falling, or otherwise are performing below average

Limited English proficient students

Students who have been truant, suspended, or expelled

Students with special needs or disabilities

Other:

None of the above

Activity Subject Area
Please identify if an academic subject area was addressed during provision of the activity. Please check all that apply.

Reading/language arts education activities

Mathematics education activities

Science education activities

Arts and music education activities

Extracurricular education programs

Telecommunications and technology education programs

Cultural, extracurricular activities

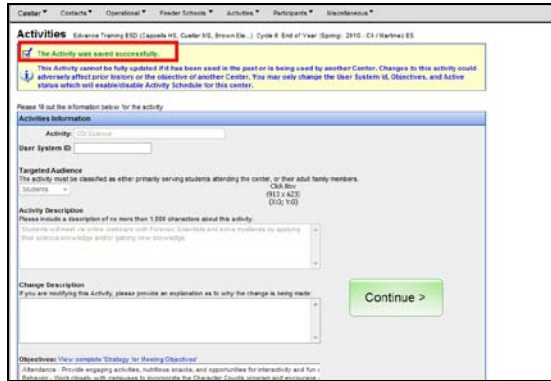
Health/physical fitness

Other:

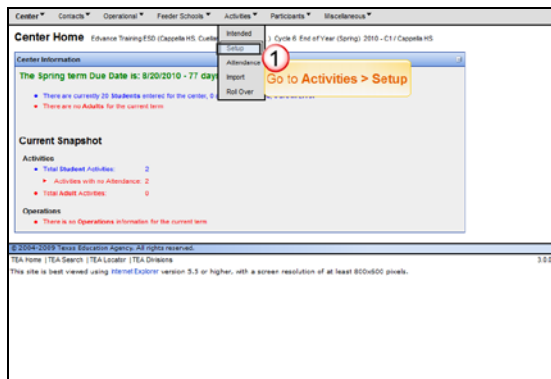
None of the above

4 Click the Save Activity button

Slide 17
Text Captions: Click the Save Activity button

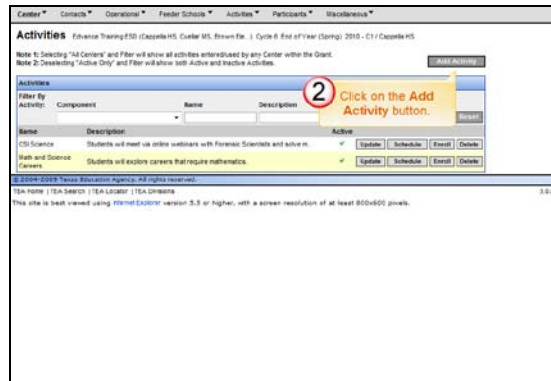


Slide 19
Text Captions: Continue >



Slide 20
Text Captions: Go to Activities > Setup

Center: Adding an Activity



Slide 22
Text Captions: Click on the Add Activity button.



Slide 23
Text Captions: The Activities page opens
Add the activity name

Center: Adding an Activity

Center * Contacts * Operational * Foster Schools * Activities * Participants * Miscellaneous *

Activities

Advance Training ESSD (Capeville HS, Center MS, Brown Elm -) Cycle 6 End of Year (Spring) 2019 - C1 / Capeville HS

Please fill out the information below for the activity.

Activity Information

Activity:

Beer System ID:

Targeted Audience
The activity must be classified as either primarily serving students attending the center, or their adult family members.

Students

Activity Description
Please include a description of no more than 1,000 characters about this activity.

Select the targeted audience

Objectives: [View complete Strategy for Meeting Objectives](#)

Attendance - Provide engaging activities, nutritious snacks, and opportunities for interactivity and fun.
Behavior - Work closely with companions to incorporate the Character Counts program and encourage.
Demotion Rates - Students will develop a Life Plan and explore their potential needs as adults.
Graduation Rates - Campuses will work to encourage students to participate and pursue education to
Assessment - Students will participate in engaging activities that include cooperative games, speeches.

This checkbox will determine whether the Schedule is turned on for this Activity for this term. (Check enables Schedule / Uncheck disables Schedule)

Active

Activity Categories

Activity Targeted Students

Slide 24
Text Captions: Select the targeted audience

Center * Contacts * Operational * Foster Schools * Activities * Participants * Miscellaneous *

Activities

Advance Training ESSD (Capeville HS, Center MS, Brown Elm -) Cycle 6 End of Year (Spring) 2019 - C1 / Capeville HS

Please fill out the information below for the activity.

Activity Information

Activity: Family, Teachers and Digital via

Beer System ID:

Targeted Audience
The activity must be classified as either primarily serving students attending the center, or their adult family members.

Adult Family

Activity Description
Please include a description of no more than 1,000 characters about this activity.

Enter the Activity Description

Objectives: [View complete Strategy for Meeting Objectives](#)

Attendance - Provide engaging activities, nutritious
Behavior - Work closely with companions to incorporate
Demotion Rates - Students will develop a Life Plan
Graduation Rates - Campuses will work to encourage
Assessment - Students will participate in engaging activities that include cooperative games, speeches.

This checkbox will determine whether the Schedule is turned on for this Activity for this term. (Check enables Schedule / Uncheck disables Schedule)

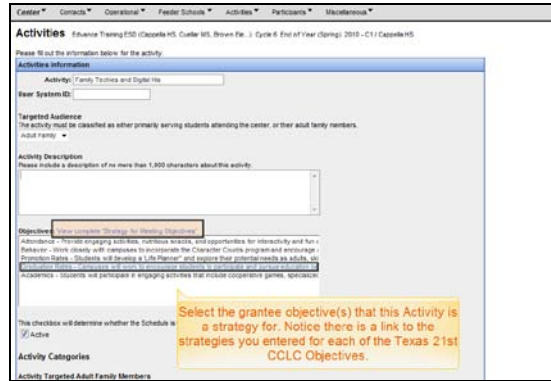
Active

Activity Categories

Activity Targeted Adult Family Members

Slide 27
Text Captions: Enter the Activity Description

Center: Adding an Activity



Center * Contacts * Operational * Feeder Schools * Activities * Participants * Miscellaneous *

Activities Education Training (200 - CapellaHS, Custer HS, Brown Elk - 3, Cycle 6 End of Year (Spring) 2019 - C1) CapellaHS

Please fill out the information below for the activity.

Activities Information

Activity: Family Teachers and Digital via

Beer System ID:

Targeted Audience
The activity must be classified as either primarily serving students attending the center, or their adult family members.
Adult Family *

Activity Description
Please include a description of no more than 1,000 characters about the activity.

Objectives [View complete Strategy for Meeting Objectives](#)

Attendance - Provide engaging activities, activities snacks, and opportunities for interactivity and fun + Behavior - Work closely with campuses to incorporate the Character Counts program and encourage + Decision Making - Students will develop a "Life Plan" and explore their interests/careers as adults. **Performing Arts - Campuses will provide opportunities for students to perform and present original work.** **Physical Education - Provide opportunities for students to participate in physical education activities, games, and sports.**

This checkbox will determine whether the Schedule is
 Active

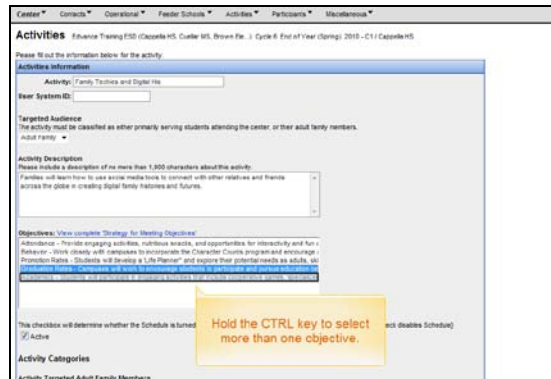
Activity Categories

Activity Targeted Adult Family Members

Select the grantee objective(s) that this Activity is a strategy for. Notice there is a link to the strategies you entered for each of the Texas 21st CCLC Objectives.

Slide 28

Text Captions: Select the grantee objective(s) that this Activity is a strategy for. Notice there is a link to the strategies you entered for each of the Texas 21st CCLC Objectives.



Center * Contacts * Operational * Feeder Schools * Activities * Participants * Miscellaneous *

Activities Education Training (200 - CapellaHS, Custer HS, Brown Elk - 3, Cycle 6 End of Year (Spring) 2019 - C1) CapellaHS

Please fill out the information below for the activity.

Activities Information

Activity: Family Teachers and Digital via

Beer System ID:

Targeted Audience
The activity must be classified as either primarily serving students attending the center, or their adult family members.
Adult Family *

Activity Description
Please include a description of no more than 1,000 characters about the activity.
Families will learn how to use social media tools to connect with other families and friends across the globe in creating digital family histories and futures.

Objectives [View complete Strategy for Meeting Objectives](#)

Attendance - Provide engaging activities, activities snacks, and opportunities for interactivity and fun + Behavior - Work closely with campuses to incorporate the Character Counts program and encourage + Decision Making - Students will develop a "Life Plan" and explore their interests/careers as adults. **Performing Arts - Campuses will provide opportunities for students to perform and present original work.** **Physical Education - Provide opportunities for students to participate in physical education activities, games, and sports.**

This checkbox will determine whether the Schedule is turned
 Active (click to toggle Schedule)

Activity Categories

Activity Targeted Adult Family Members

Hold the CTRL key to select more than one objective.

Slide 29

Text Captions: Hold the CTRL key to select more than one objective.

Objectives: View complete Strategy for Meeting Objectives
Administration - Provide engaging activities, enrichment activities, and opportunities for interactivity and fun + behavior - Visit closely with campuses to incorporate the Character Counts program and encourage - Promotion/Patrol - Students will become a Life Member and explore their potential needs as adults, etc. Understand Dates - Campuses will learn about upcoming programs to participate and purchase additional - Activities - Promote and participate in ongoing activities that include community, parent, sponsored

This checkbox will determine whether the Schedule is turned on for this Activity for this term. (Check enables Schedule / Uncheck disables Schedule)
 Active

Activity Categories

Activity Targeted Adult Family Members
Please choose the primary category for this activity.
Other

Other Description:

Adult Certification
If this activity is for preparing or certifying adults, please choose a certification.
Other

Activity Subject Area
Please identify if an academic subject area was addressed during provision of the activity
Please check all that apply.
 Reading/language arts education activities
 Mathematics education activities
 Science education activities
 Arts and music education activities
 Entrepreneurial education programs

Select the appropriate options for each Activity Category.

The categories that are available depend on the targeted audience and are aligned with the national 21st Century Community Learning Centers data system, PPICS.

Slide 32

Text Captions: Select the appropriate options for each Activity Category. The categories that are available depend on the targeted audience and are aligned with the national 21st Century Community Learning Centers data system, PPICS.

Objectives: View complete Strategy for Meeting Objectives
Administration - Provide engaging activities, enrichment activities, and opportunities for interactivity and fun + behavior - Visit closely with campuses to incorporate the Character Counts program and encourage - Promotion/Patrol - Students will become a Life Member and explore their potential needs as adults, etc. Understand Dates - Campuses will learn about upcoming programs to participate and purchase additional - Activities - Promote and participate in ongoing activities that include community, parent, sponsored

This checkbox will determine whether the Schedule is turned on for this Activity for this term. (Check enables Schedule / Uncheck disables Schedule)
 Active

Activity Categories

Activity Targeted Adult Family Members
Please choose the primary category for this activity.
Family and Parent Support Services, Promotion of parental involvement

Other Description:

Activity Subject Area
Please identify if an academic subject area was addressed during provision of the activity
Please check all that apply.
 Reading/language arts education activities
 Mathematics education activities
 Science education activities
 Arts and music education activities
 Entrepreneurial education programs

This activity targets family literacy.

Slide 33

Text Captions: This activity targets family literacy.

Center: Adding an Activity

Objectives: View complete Strategy for Meeting Objectives
Adherence - Provide engaging activities, activities awards, and opportunities for interactivity and Fun + Behavior - Work closely with campuses to incorporate the Character Counts program and encourage...
Promotion/Partners - Students will benefit a Life Member and receive their membership as adults via...
Character Counts - Campuses will learn about character programs to participate and pursue educational...
Activities - Promote and participate in appropriate activities that include constructive, positive, respectful...

This checkbox will determine whether the Schedule is turned on for this Activity for this term. (Check enables Schedule / Uncheck disables Schedule)
 Active

Activity Categories
Activity Targeted Adult Family Members
Please choose the primary category for this activity.
Family and Parental Support Services - Promotion of Family Literacy

'Other' Description:

Adult Certification
If the activity is for preparing or certifying adults, please choose a certification.
Adult Certification
 Adult Certification (Selected)
'Other' Description:

Activity Subject Area
Please identify if an academic subject area was addressed during provision of the activity.
Please check all that apply.
 Reading/language arts education activities
 Mathematics education activities
 Science education activities
 Arts and music education activities
 Entrepreneurship education programs

Slide 34

Text Captions: Select the Adult Certification if it applies to the activity you are offering.

Active

Activity Categories
Activity Targeted Adult Family Members
Please choose the primary category for this activity.
Family and Parental Support Services - Promotion of Family Literacy

'Other' Description:

Adult Certification
If the activity is for preparing or certifying adults, please choose a certification.
Adult Certification
Adult Certification

'Other' Description:

Activity Subject Area
Please identify if an academic subject area was addressed during provision of the activity.
Please check all that apply.
 Reading/language arts education activities
 Mathematics education activities
 Science education activities
 Arts and music education activities
 Entrepreneurship education programs
 Telecommunications and technology education programs
 Culture activities/social studies
 Health/fitness/wellness
 Other _____
 None of the above

Save Schedule Cancel Activity List

Slide 37

Text Captions: Select the appropriate Activity Subject Area(s) addressed.

Center * Contacts * Operational * Feeder Schools * Activities * Participants * Miscellaneous *

Activities Advance Training ESD (Capeville HS, Custer HS, Brown Fir,) Cycle 6 End of Year (Spring) 2018 - C11 Capeville HS

The Activity was saved successfully.

Please fill out the information below for the activity.

Audience Information

Activity: Family Ties and Digital ties

User System ID: _____

Targeted Audience

The activity must be classified as either primarily serving students attending the center or their adult family members.

Adult Family: _____

Activity Description

Please include a description of no more than 1,000 characters about this activity.

Families will learn how to use social media tools to connect with other relatives and friends across the globe in today's digital world, business and leisure.

Change Description

If you are modifying this Activity, please provide an explanation as to why the change is being made:

Objectives: [View complete Strategy for Identifying Objectives](#)

Attendance - Provide engaging activities, out-of-class events, and opportunities for interactivity and fun behavior - Work closely with companies to incorporate the Character Counts program and encourage involvement - Encourage students to "Live It Forward" and ensure their generation needs as adults, use [Confidential Links](#) - Connects all four Subelement students to participate and build relationships - Encourage responsibility and leadership by assigning positions for all participants by using [Accountability](#)

Slide 42

Text Captions: You will see a notice at the top of the page when an activity has been successfully saved.

Next Step: Set up the activity schedule, the time and dates when the activity is available.