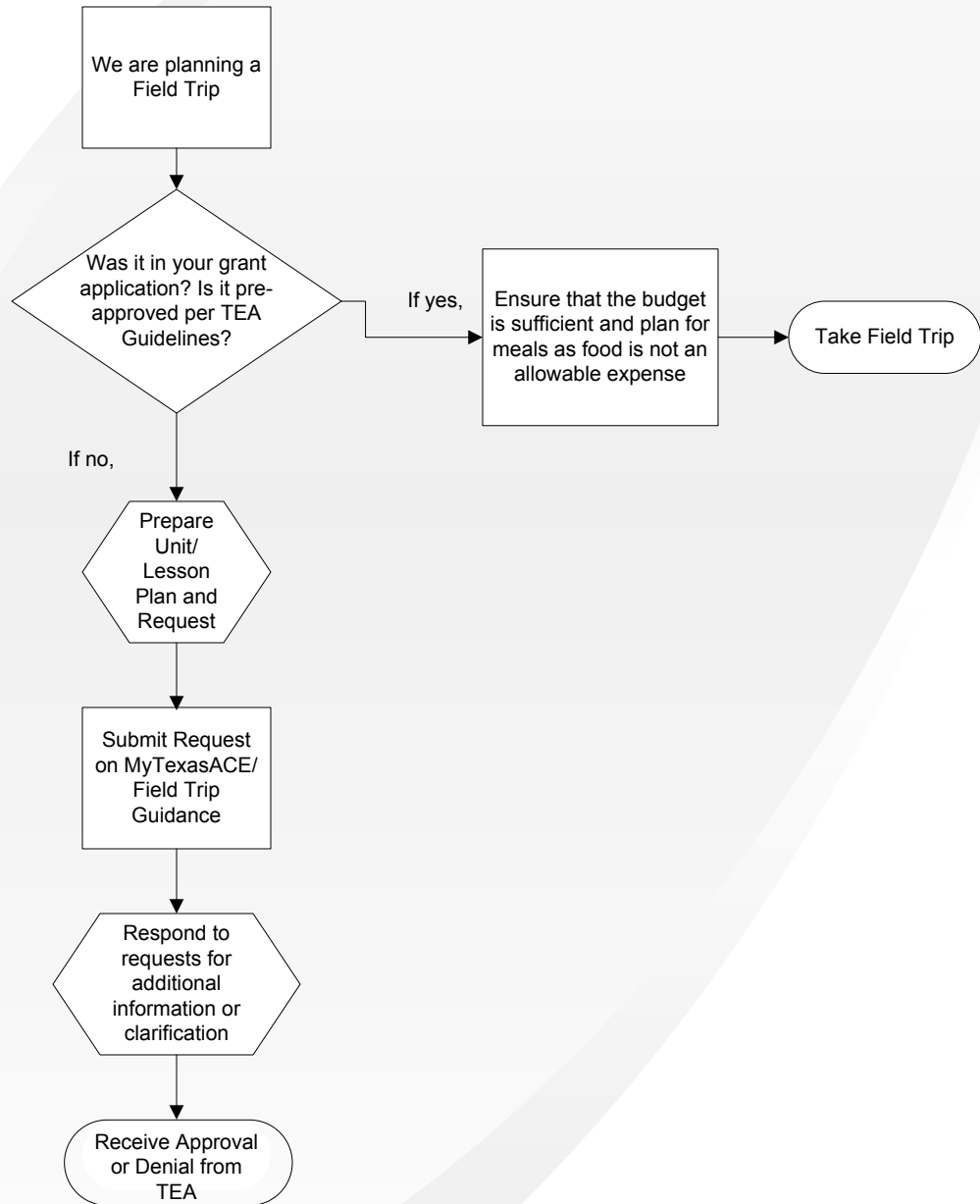
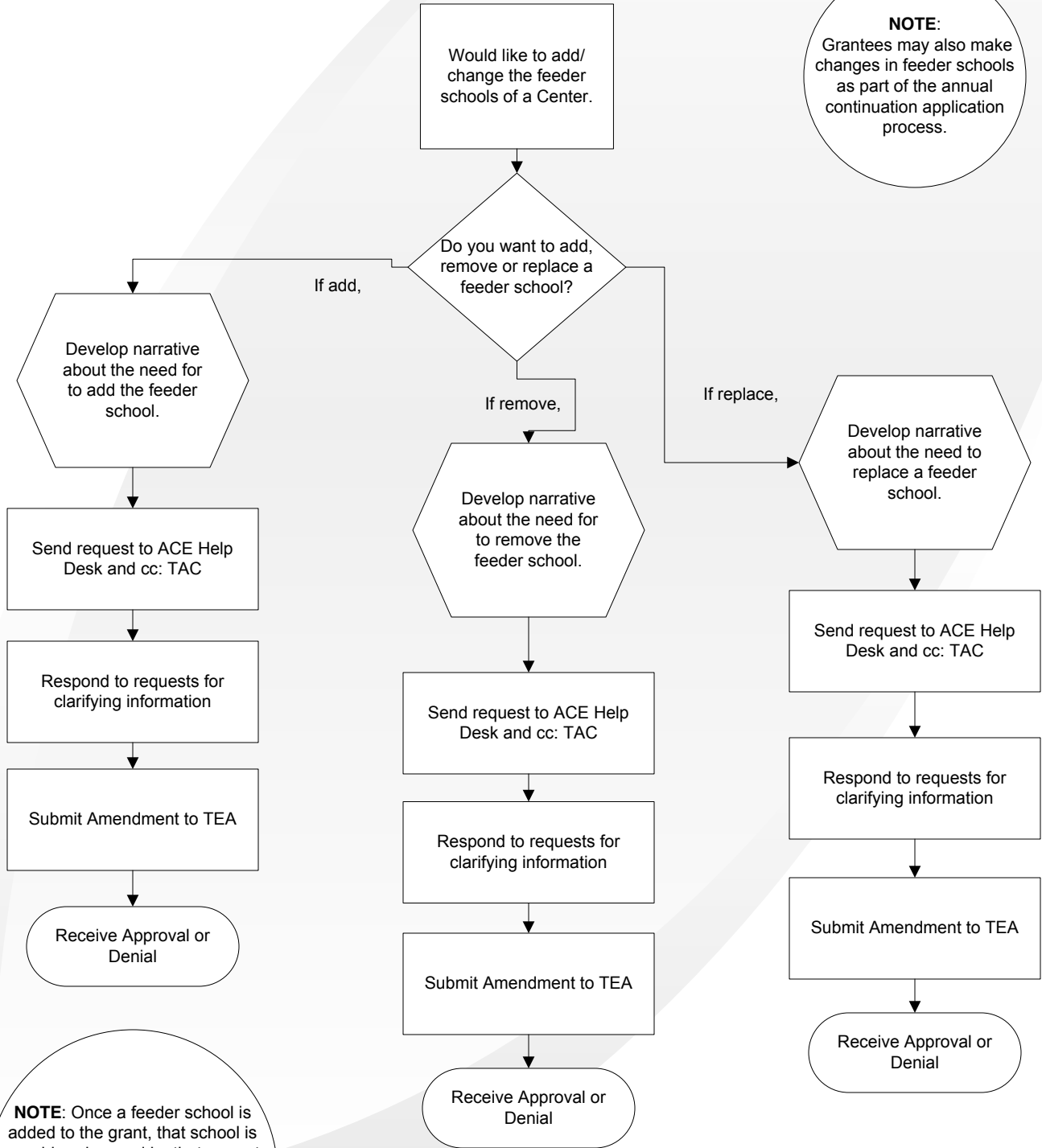


Texas ACE Field Trip Approval Process



Texas ACE Feeder School Change Process

NOTE:
Grantees may also make changes in feeder schools as part of the annual continuation application process.

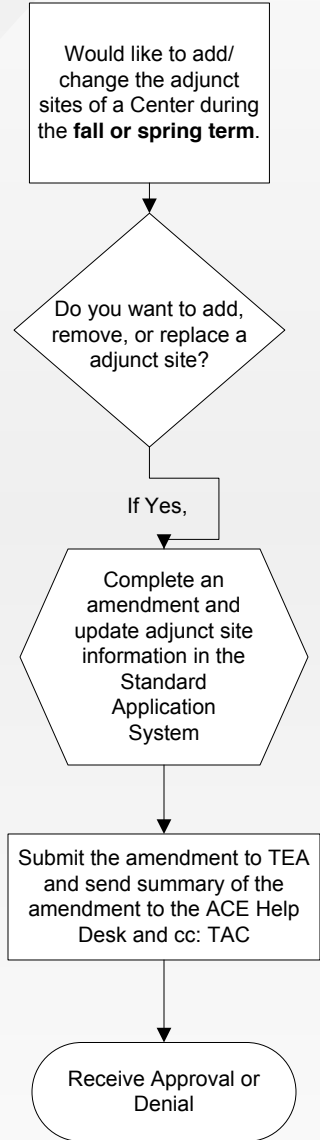


NOTE: Once a feeder school is added to the grant, that school is considered served by that current 21st CCLC grant and not eligible to be included in a new grant application until the current funding period is over.

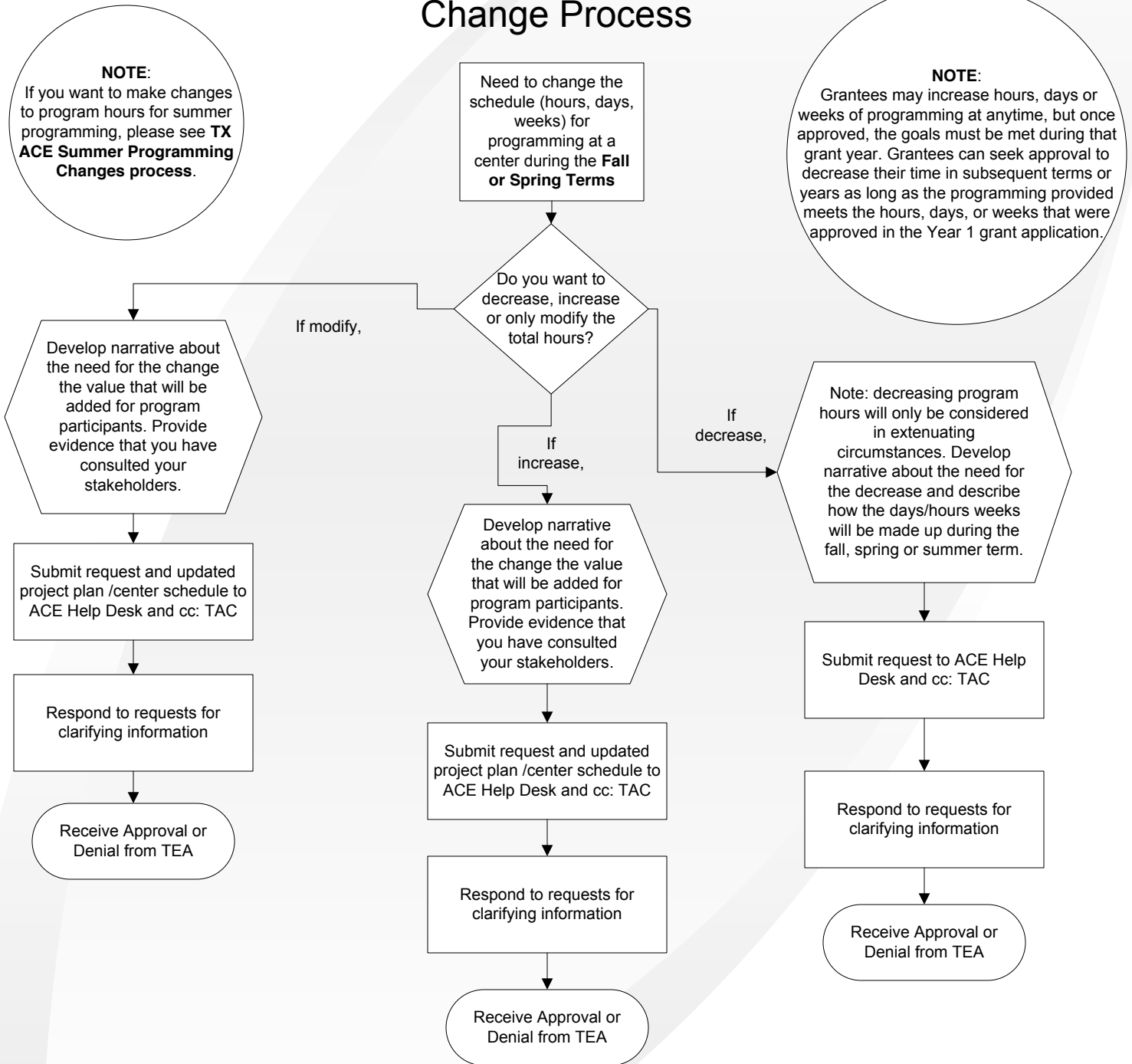
Texas ACE Adjunct Site Change Process: Fall & Spring Term Only

NOTE:
If you want to make changes to adjunct sites for summer programming, please see **TX ACE Summer Location Changes process**.

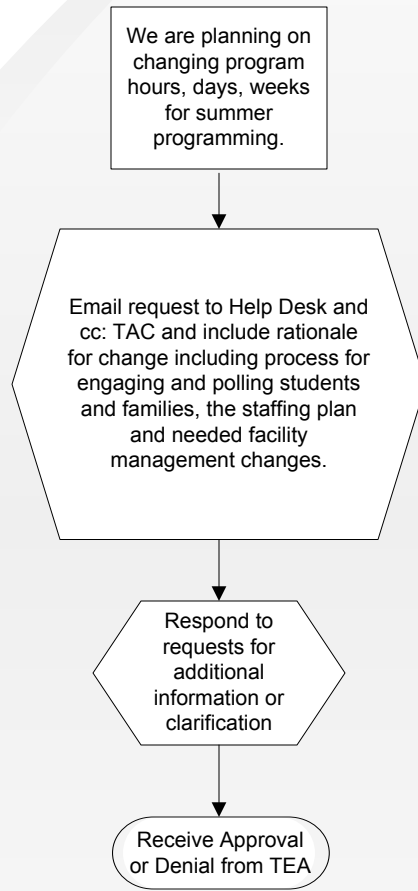
NOTE:
Grantees may also make changes to adjunct sites as part of the annual continuation application process.



Texas ACE Program Operations Change Process

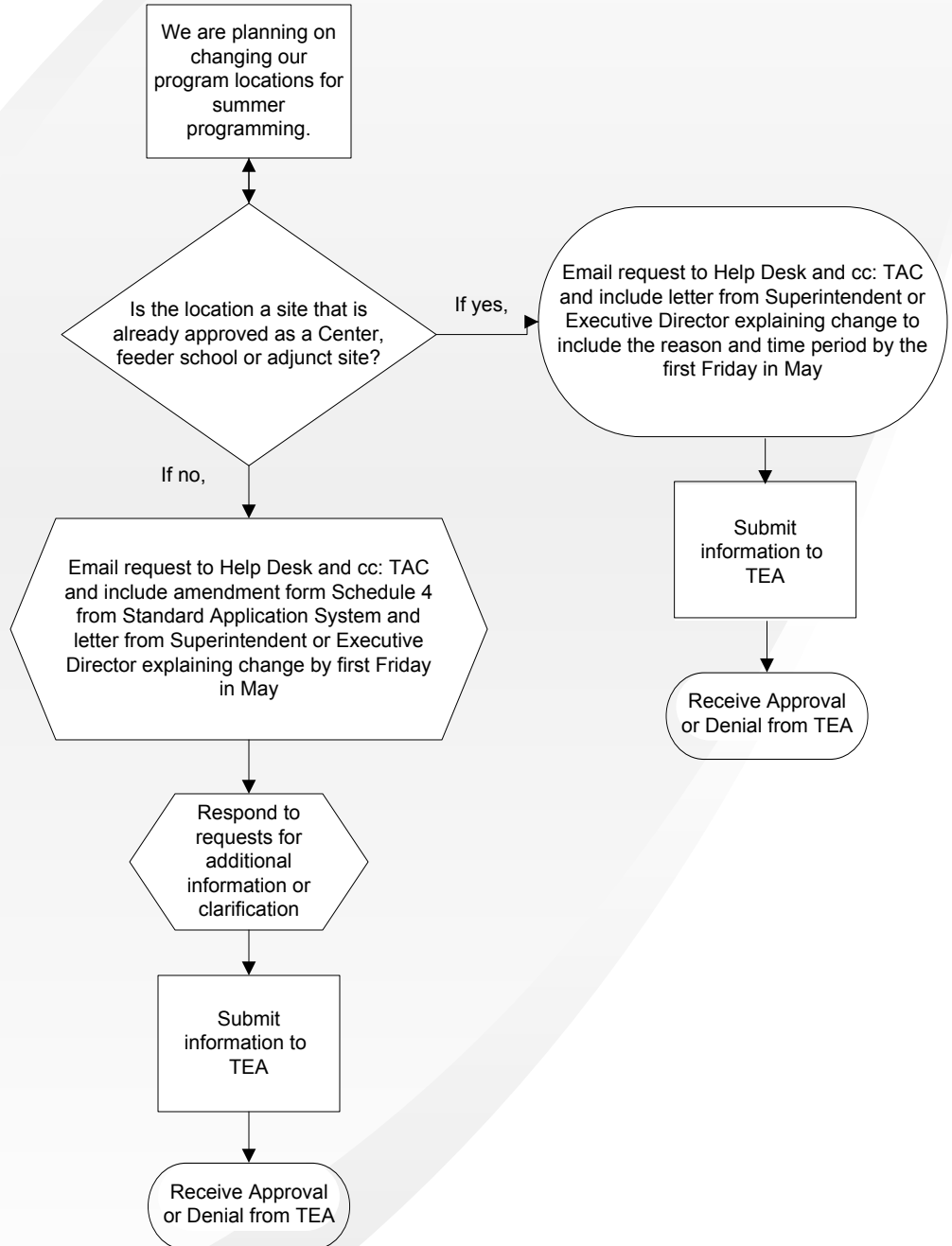


Texas ACE Summer Program Operations Changes Approval Process



NOTE: Grantees can not decrease any hours, days, or weeks below what is approved in the Notice of Grant Award (NOGA).

Texas ACE Summer Location Changes Approval Process



Texas ACE Campus/School Name/ID Change Process

